

# ASIL PRO

WE ARE COMMITTED TO REVOLUTIONIZING  
THE WAY BUSINESS ACCESS ESSENTIAL COMMODITIES



[www.asilpro.com.tr](http://www.asilpro.com.tr)



## About Us

Asil PRO Company, has been manufacturing polymeric compound and masterbatches for over 10 years ( in Turkey and Iran ) and offers a wide range of thermoplastic compounds and polyolefin based masterbatches . Asil PRO Company is ready for long term and reliable supplement and export of polymeric base products with a focus on different grades of Polyolefins compounds and masterbatches. Having offices and business partners in countries such as Turkey, Iran, Iraq, UEA and Oman, and being included in major Iranian Petrochemical Plants' vendor lists, including but not limited to Jam, Amirkabir, Shazand, Tabriz, Lale, Bandar Emam, Aria Sasol, Arvand, Maroon and Mehr Petrochemical companies, we guarantee a professional service and a pleasant experience in worldwide exporting.

### Our Mission

- Variety in products and suppliers worldwide
- Offering the best price
- Stable and reliable supplement of products
- Fast delivery of products and services
- Providing Reliable Financial Solutions

### Our Values

- We have faith in the power of knowledge and science. We endeavor to implement these beliefs through creativity, flexibility and learning.
- We see it as our responsibility to treat the world with kindness, respect, honesty and loyalty.
- Our team appreciates the beauty in a job well done and is committed to create and provide services for our customers in the best way possible.

### Why ASIL PRO Compounds?

In light of years of research and development, ASIL PRO Compounds was founded to raise technical knowledge as well as quality of polymeric products.

This company consists of a team of professional, young, motivated and innovative people, uses engineered equipment and adopts a scientific and innovative approach to the development and production of advanced compounds and masterbatches in order to improve properties of polymeric products. Enhancement of mechanical properties of polymeric compounds, elimination of warpage and shrinkage, reduction of weight of final products are among the advanced industrialized technological features in ASIL PRO Compounds.

In line with applying the latest findings of experts and researchers in polymer science, ASIL PRO Compounds field of activity covers different industries like plastic part productions, home equipment and appliances, automotive industry, construction industry, Agriculture industry, Pipe, Geosynthetic, Packaging and other industries which are dealing with polymeric materials. ASIL PRO Compounds concentrates on issues related to the enhancing mechanical performance such as stiffness, toughness and balanced overall properties, improving the dimensional stability upon molding, processing conditions, and weight reduction of finished products.



# Content



10 Automotive Industry

Home Appliances

20



28 Electrical & Electronic Industry

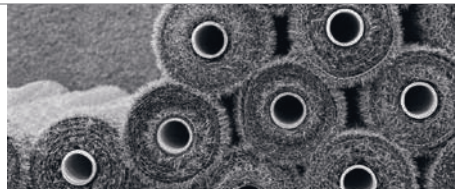


Pipe Industry

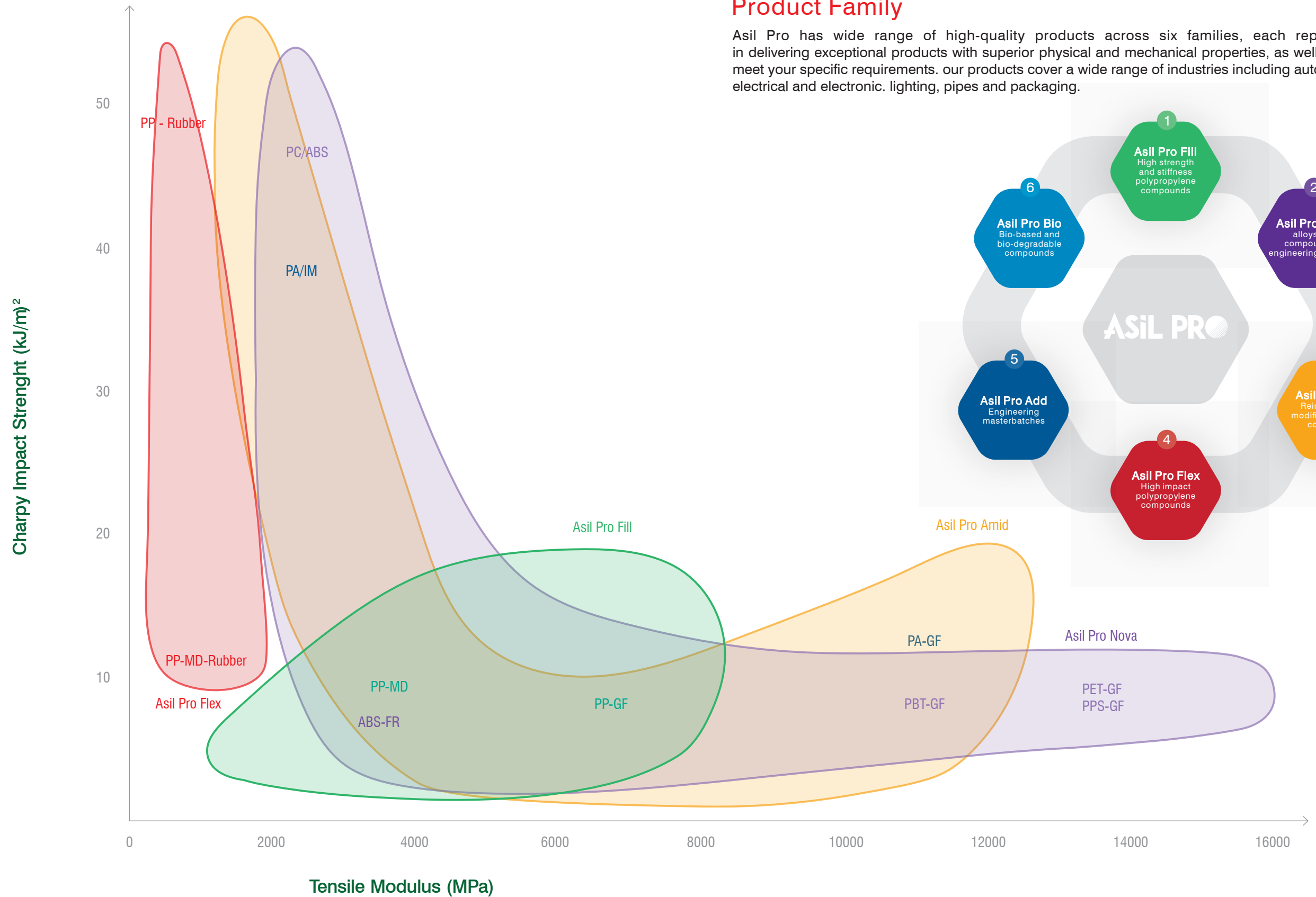
40



42 Light & Thermal Stabilizer Masterbatches



| Product Family



## Product Family

Asil Pro has wide range of high-quality products across six families, each representing our expertise in delivering exceptional products with superior physical and mechanical properties, as well as innovative solutions to meet your specific requirements. our products cover a wide range of industries including automotive, home appliances, electrical and electronic, lighting, pipes and packaging.





Home  
Appliances

## Home Appliances

In recent years, Asil Pro Company has designed and produced a variety of compounds for the growing home appliance industry in the country. Our experience has demonstrated our ability to meet the needs of manufactures producing products such as washing machines and dishwashers.

Asil Pro Company takes pride in entering this competitive field alongside international compounders, successfully replacing some imported materials. With a strong focus on developing foreign markets, we are currently expanding our exports to Central Asian countries. Soon, we aim to secure a significant share in the export market of knowledge - based products within the home appliance industry.

Backed by academic knowledge, an experienced engineering team, and well-equipped laboratories. Asil Pro has developed high-quality products at competitive prices, positioning ourselves to further influence this industry.





**ABS-FR**  
Color matched

**Instrument Panel**

- High flame resistance
- Beautiful appearance and high gloss
- Color and dimensional stability

**PP-MD**

**Door Frame**

- Excellent mechanical strength
- Appropriate dimensional stability

**PC**  
Colormatched

**Front Door Panel**

- Adequate transparency
- High scratch resistance

**PP-GF**

**Washing Machine Drum & Tub**

- Unique mechanical strength
- Resistance to oscillating stresses
- Excellent assemblability and weldability

**PP-CaCo3**

**Detergent Dispenser Drum Lifter**

- Appropriate dimensional stability
- High resistance to chemicals
- Beautiful appearance and suitable color matching

	Compound	Tensile Modulus (MPa)	Tensile Strength (MPa)	Charpy Impact Strength (KJ/m <sup>2</sup> )
Asil Pro Fill	PP-30GF	min. 7000	min. 90	min. 15
	PP - (25-35) CaCo <sub>3</sub>	1800-2500	19-23	3. 5-5. 5
	PP-20Talc	min. 1900	min. 24	min. 5
Asil Pro Nova	ABS-FR (UL-94:V0)	min. 2500	min. 38	min. 11
	PC Colormatched	min. 2300	—	min. 15



Antibacterial Masterbatches

**Various Interior Parts**  
➔ Antibacterial surfaces without compromising mechanical and surface properties

PP-CaCO<sub>3</sub> (High Impact)

**Refrigerator Drawer**  
➔ High impact resistance at low temperatures  
➔ Good dimensional stability  
➔ Good appearance quality

ABS-Colormatched

**Refrigerator Door and Wall Panel**  
➔ Excellent color stability  
➔ Good appearance quality

PP-FR

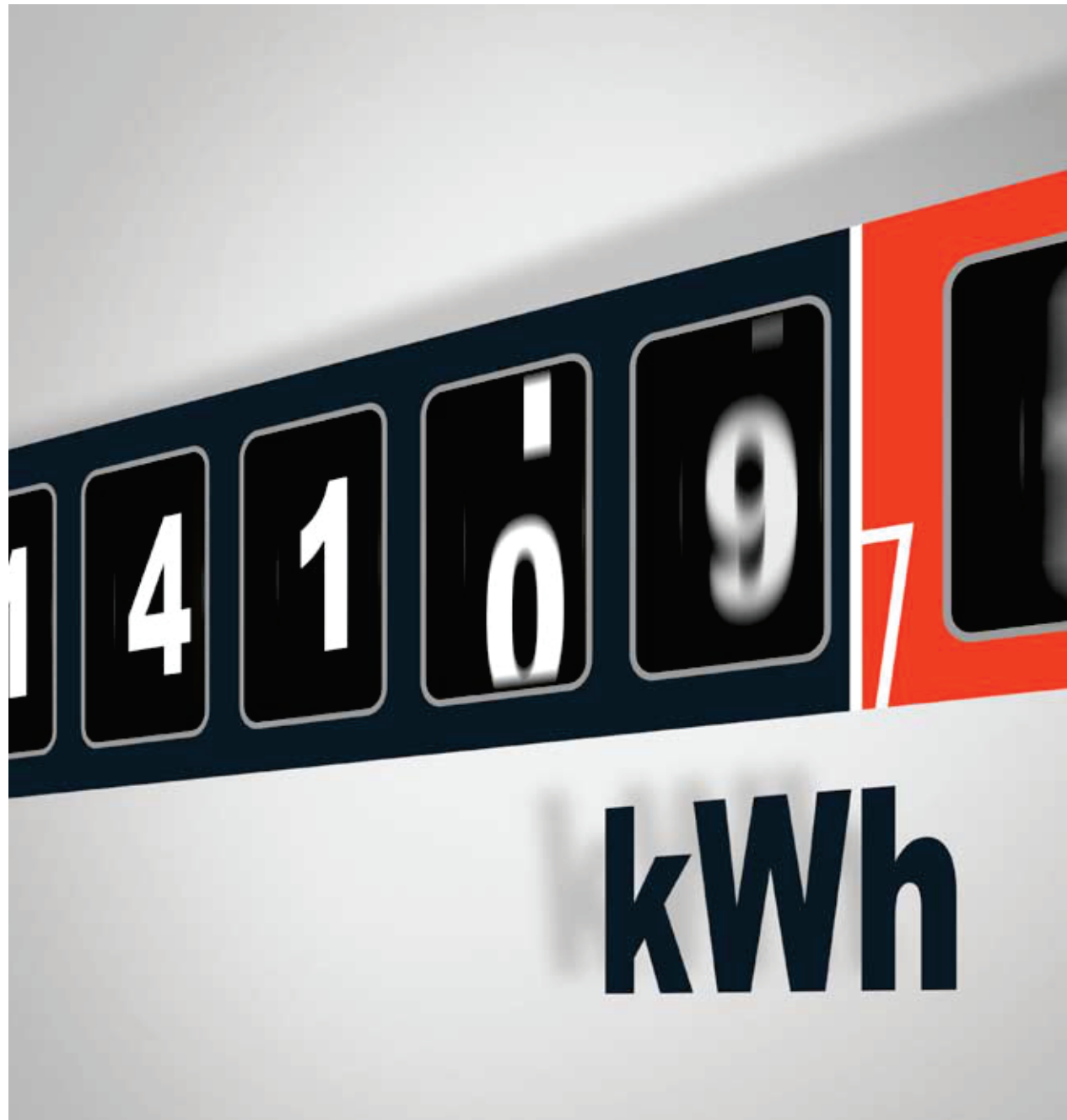
**Refrigerator Basement**  
➔ High flame resistance  
➔ Appropriate dimensional stability  
➔ Good processability

	Compound	Tensile Modulus (MPa)	Tensile Strength (MPa)	Charpy Impact Strength (kJ/m <sup>2</sup> )
Asil Pro Fill	PP - (25-35) CaCO <sub>3</sub>	1800-2500	19-23	3.5-5.5
	PP-FR (UL-94:V0)	min. 1350	min. 17	min. 3.5
	PP-FR (UL-94:V2)	min. 1500	min. 30	min. 5
Asil Pro Nova	ABS-Colormatched	min. 2500	38	min. 20
Asil Pro Add	Antibacterial Masterbatches	Antibacterial Activity Value (R) ≥ 2		



## Electrical & Electronic Industry





## Electrical & Electronic Industry

Significant strides in collaboration with leading manufacturers in the electronics industry have established Asil Pro as a reliable and capable supplier of raw materials. Asil Pro has innovated flame retardant compounds to align with expanding national and international safety requirements, thereby reducing risks associated with plastic materials in the electrical sector.

These products undergo rigorous laboratory and performance testing, achieving retardant rating such as V0 in the UL94 standard and glow wire flammability indices up to 960°C. Timely delivery, superior quality, competitive pricing, and comprehensive after-sales technical support are vital factors that attract electronics manufacturers to partner with Asil Pro.







Terminal Blocks

- PA6-FR
- PA66-FR
- Excellent flame retardant properties (V0)
- Halogen-free flame retardant materials
- GWFI up to 960 °C

Circuit Breakers

- PA-GF-FR
- PA-MD-FR
- PBT-GF-FR
- Excellent flame retardant properties (V0)
- Halogen-free flame retardant materials
- GWFI up to 960 °C
- High thermal stability
- High impact properties

Capacitor

- PA6-FR
- Excellent flame retardant properties (V0)
- Halogen-free flame retardant materials
- GWFI up to 960 °C

Measuring Equipments

- PC-GF-FR
- PA-GF-FR
- PA-MD-FR
- PBT-GF-FR
- Excellent flame retardant properties (V0)
- Halogen-free flame retardant materials
- GWFI up to 960 °C
- High thermal stability
- High impact properties



Compound	Flammability (UL94)	GWFI (°C)	Flame Retardant	Tensile Modulus (Mpa)	Notched Charpy Impact Strenght (KJ/m²)	Lighting Industry	Measuring Equipment	High Voltage System & Capacitor	Circuit Breakers	Convertor/Plug/ Connectors	Medical Equipment Industry	IT Industry
PA6-GF	HB	650	Halogen-Free	min. 9500	min. 10						✓	
PA6-MD-FR	V2	960	Halogen-Free	min. 5000	min. 5				✓			
PA6 (thermal conductive)	V0	960	Halogen-Free	min. 9000	min. 2	✓						
PA6-FR	V0	960	Halogen-Free	min. 3500	min. 5			✓		✓	✓	✓
PA66-FR	V0	960	Halogen-Free	min. 3700	min. 5			✓		✓		
PA6-30GF-FR	V0-V2	960	Halogen-Free	min. 10000	min. 10			✓	✓			
PA66-30GF-FR	V0	960	Halogen-Free	min. 10000	min. 10			✓	✓			
ABS-FR	V0	960	Halogenated	min. 2400	min. 10	✓					✓	✓
PC/ABS-FR	V0	960	Halogenated	min. 2500	min. 43			✓			✓	✓
PC Diffusing	V2	850-960	Halogen-Free	min. 2200	min. 15	✓						
PC-FR	V0	960	Halogen-Free	min. 2100	min. 50			✓				
PC-GF-FR	V0	960	Halogenated	min. 4400	min. 8			✓				
PET-GF -FR	V0	-	Halogenated	min. 1200	min. 9			✓				
PBT-FR	V0	960	Halogenated	min. 3000	max. 10							✓
PBT-GF	HB	650	Halogen-Free	5000-8000	10-12	✓					✓	
PBT-GF-FR	V0	960	Halogenated	min. 10000	min. 9	✓		✓	✓			
PBT/PET-GF-FR	V0	960	Halogenated	7000-10000	7-10				✓	✓		
PP-FR	V0	-	Halogen-Free	min. 1350	min. 3.5	✓						
PP-FR	V2	-	Halogen-Free	min. 1500	min. 5					✓		
PP-GF/MD	HB	-	Halogen-Free	min. 6000	min. 10	✓					✓	
PP-MD-FR	V0	850	Halogen-Free	min. 1900	min. 3			✓				
Asil Pro Amid					Asil Pro Nova					Asil Pro Fill		

- PC-Light Diffuser
  - ➡ Desirable light transmission
  - ➡ Desirable light scattering properties

## Round Ceiling Lamp Body

- PP-MD
  - ABS
- ➔ Resistance to discoloration & yellowing at high temperatures
  - ➔ High opacity
  - ➔ High thermal stability

Lamp Body

- PA6-Thermally Conductive
  - ➔ High thermal conductivity
  - ➔ High opacity
  - ➔ Excellent flame retardant properties (V0)
  - ➔ High economic efficiency compared to aluminum heat sinks

- PBT-GF
  - PBT-GF-MD
- ➔ Good flame retardant properties
  - ➔ Resistant to discoloration & yellowing at high temperatures
  - ➔ High opacity
  - ➔ High thermal stability





#### POS

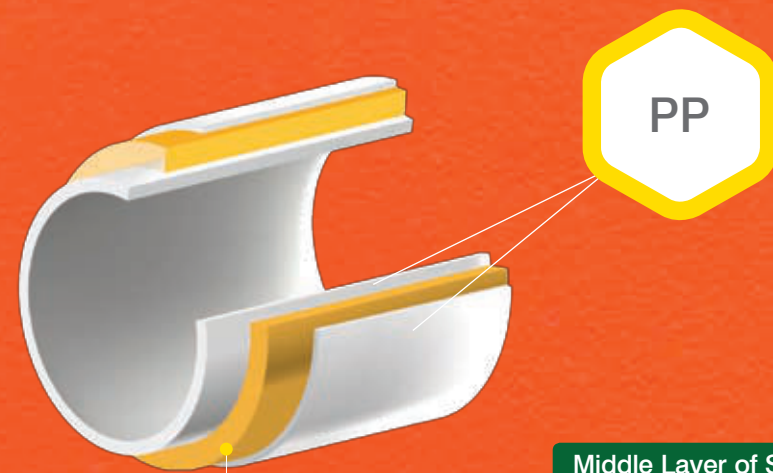
- PC/ABS-FR
- ➔ Good flame retardant properties
- ➔ Colormatch with excellent surface properties
- ➔ High strength and mechanical durability

#### Office and IT Equipment

- PBT(-MD) (Colormatched)
- PC, ABS, PC/ABS (Colormatched)
- ➔ High scratch resistance
- ➔ Beautiful appearance
- ➔ Excellent impact resistance



Compounds for Silent Pipes and Fittings  
(Sound Attenuation)



- Middle Layer of Sewage Pipes for Silent Pipes
- Higly-Filled PP Nanocomposite
  - ➡ Great process ability
  - ➡ Unique combination of ring stiffness and impact strength
  - ➡ Specific sound attenuation properties compliant with international standard for noise emission in buildings

	Grade	Melt Flow Index (g/10min)	Tensile Modulus (MPa)	Charpy Impact Strength [kJ/m²]	Applications
Asil ProFill	PP-(20-30)GF	max. 0.4	3000-5000	min. 12	Hot & Cold Water Piping
	Highly-Filled PP-Nanocomposites	max. 0.4	min. 2200	No Break	Silent Pipes
		max. 2	min. 2000	min. 25	Silent Fittings

Compounds for Cold & Hot Water Pipes



- Middle Layer of Composite Pipes for Cold & Hot Water
- PP-GF
  - ➡ Low Linear thermal expansion coefficient
  - ➡ High modulus and stiffness
  - ➡ Lower weight compared to aluminim-reinforced pipes
  - ➡ Easy and fast installation, up to 30% shorter installation time compared to aluminum-reinforced pipes





## Light & Thermal Stabilizer Masterbatches

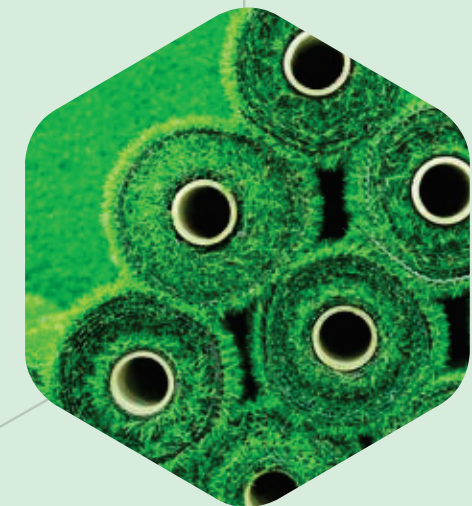


## Light & Thermal Stabilizer Masterbatches

### Asil ProAdd Engineering masterbatches

AsilPro utilizes advanced plastic stabilization technology to address the needs of manufacturers in the plastic industry, focusing on enhancing light and thermal durability. Our Asil ProAdd products feature cutting-edge additive formulations that include synergistic combinations of stabilizers such as Hindered Amines (HALS), Ultraviolet Absorbers (UVA), primary antioxidants, and secondary antioxidants. These additives are carefully formulated and optimized for concentration within appropriate polymer matrices.

The masterbatches, ensuring a guaranteed service life for the end consumer's products.



### Asil ProAdd in Artificial Turf (Monofilament and Polyolefin Strips)

- Utilizes advanced technology for stabilizing artificial turf, monofilament, and tape products.
- Provides superior polymer protection for long-term applications (exceeding three years).
- Prevents Water Carry Over(WCO) phenomenon and enhances production rates.
- Formulated with base resins (LLDPE and PP) suitable for the production process.





### Asil ProAdd in Highly Durable Packaging (Jumbo and Polypropylene Bags)

- Utilizes a synergistic combination of various HALS light stabilizers and optical absorbers.
- Protects polymers against UV radiation and the damaging effects of weathering conditions.



### Asil ProAdd in Urban Furniture ( Chairs, etc.)

- Utilizes a synergistic combination of HALS light stabilizers and UV absorbers.
- Protects polymers against UV radiation and the damaging effects of weathering conditions.
- Suitable for thick parts produced by injection molding and roto-molding processes.
- Base resins include polyethylene and polypropylene, ideal for the production process.



### Asil ProAdd in Agricultural Plastic Products

- ➔ Utilizes three generations of HALS light stabilizers explicitly developed for agricultural plastics.
- ➔ Utilizes a synergistic combinations of HALS, UV absorbers, and thermal stabilizers for enhanced protection.
- ➔ Provides superior polymer protection in long-term applications ( up to three years warranty).
- ➔ Exhibits high resistance to insecticides and pesticides containing chlorine and sulfur.

		Increase Useful Life		
Masterbatch Type	Film Thickness	200-210 µm		
	Service Life	1 Year	2 Years	3 Years
Based on First Generation of HALS	Minimum Chemical Resistance			
	Consumption Dosage (wt.%)	3.5	4.0	5.0
	Sulphur Content (ppm)	<100	<150	<200
	Chlorine Content (ppm)	<50	<50	<50
Based on Second Generation HALS for Greenhouse Films	Average Chemical Resistance-Impossibility of Burning Sulphur			
	Consumption Dosage (wt.%)	6.0	9.0	13.5
	Sulphur Content (ppm)	<500	<750	<1000
	Sulphur Content (ppm)	<50	<100	<100
Based on Third Generation HALS for Greenhouse Films	High Chemical Resistance- Burning Sulphur			
	Consumption Dosage (wt.%)	6.0	9.0	10.0
	Sulphur Content (ppm)	<750	<1500	<1500
	Sulphur Content (ppm)	<50	<150	<150





**ASIL PRO**

Address: Merkez Mah. Akar Cad. iTower Bomonti  
No:3 Kat:12 iç kapı No:77 Şişli /İstanbul  
[www.asilpro.com.tr](http://www.asilpro.com.tr)  
[info@asilpro.com.tr](mailto:info@asilpro.com.tr)

WE ARE COMMITTED TO  
REVOLUTIONIZING  
THE WAY BUSINESS ACCESS  
ESSENTIAL COMMODITIES

